

Citi-QuantCube Multi-Asset Regime VT8 Index

รายงานผลการดำเนินงาน – พฤษภาคม 2026

คุณลักษณะของดัชนี

Bloomberg Ticker	CIMARA82 Index
Currency	USD
Return Type	Excess Return
Volatility Target	8%
Decrement	2.0% p.a.
Base Date	2-Nov-2016
Core Allocation Live Date	11-Feb-2026
Live Date	11-Feb-2026
Index Universe	Equities, US Treasury, TIPS, Credits, Commodities and FX
Rebalancing Frequency	Dynamic, between daily and monthly
Index Administrator	Citigroup Global Markets Limited
Index Calculation Agent	Citigroup Global Markets Limited

ผลการดำเนินงานของดัชนี

	Citi-QuantCube Multi-Asset Regime VT8 Index
Last 1 Month ¹	-0.65%
Last 3 Months	1.91%
Year-to-Date	7.41%
Last 1 Year	5.75%
Since Base Date	
Annualized Return	9.23%
Annualized Volatility	7.37%
Sharpe Ratio	1.25
Max Drawdown	-8.10%
Worst Month	-3.67%
Best Month	6.11%

รีวิวประจำเดือน

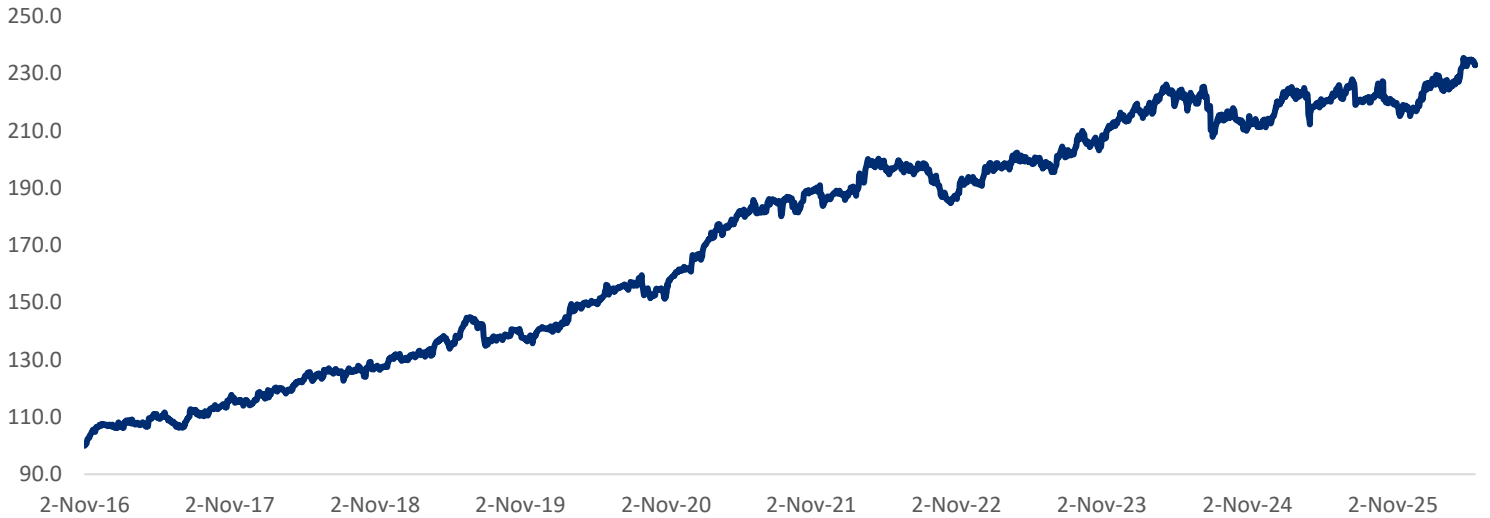
พฤษภาคม 2026¹,

- สถานะเศรษฐกิจ:** สถานะเศรษฐกิจส่งสัญญาณภาวะเติบโตร้อนแรง (Heating up) ส่วนใหญ่ตลอดเดือน
- การจัดสรร²:** ดัชนีมีสถานะซื้อสุทธิ (+38.12%) ในหุ้น และสถานะขายสุทธิ (-4.79%) ในหุ้น มีสถานะซื้อรวม (+47.32%) ในตลาดแลกเปลี่ยนเงินตราต่างประเทศ และมีสถานะซื้อ (+29.35%) ในสินค้าโภคภัณฑ์ นอกจากนี้ยังมีสถานะขายสุทธิ (-16.55%) ในพันธบัตรกระทรวงการคลังสหรัฐฯ และมีสถานะซื้อสุทธิ (2.98%) ในช่วงสั้นๆ ของเดือนด้วย สัดส่วนการลงทุนในพันธบัตร TIPS อยู่ที่ 3.56% ในเดือนนี้ ในขณะที่การลงทุนในสินเชื่อไม่ได้ถูกจัดสรรไว้ สัดส่วนการลงทุนหนี้รายเดือนหลังจากควบคุมความผันผวนแล้วอยู่ที่ 51.4%
- ผลการดำเนินงานของดัชนี:** ดัชนีมีผลการดำเนินงานลดลง 0.65% ในเดือนนี้ โดยมีสาเหตุหลักมาจากผลการดำเนินงานที่ติดลบของสินค้าโภคภัณฑ์ (-1.8%) ตามด้วยพันธบัตรรัฐบาลสหรัฐฯ (-0.11%) อย่างไรก็ตาม หุ้นมีส่วนช่วยในเชิงบวก (+1.1%) ตามด้วยอัตราแลกเปลี่ยน (+0.17%) ส่วนพันธบัตรรัฐบาลสหรัฐฯ (TIPS) ไม่เปลี่ยนแปลง

หมายเหตุ:

- ข้อมูลทั้งหมดเป็นข้อมูลถึงวันที่ 29 พฤษภาคม 2569 ส่วนข้อมูล 1 เดือนล่าสุด คือข้อมูลตั้งแต่สิ้นเดือนที่แล้ว 30 เมษายน 2569 ถึงวันที่ 29 พฤษภาคม 2569
- การจัดสรรตามประเภทสินทรัพย์ แสดงรายละเอียดการลงทุนของดัชนี CIMARA82 ในแต่ละประเภทสินทรัพย์ สำหรับหุ้นและพันธบัตรรัฐบาลสหรัฐฯ การจัดสรรจะแสดงมูลค่าสุทธิ สำหรับอัตราแลกเปลี่ยน จะแสดงมูลค่ารวมของการถือครอง USD, EUR หรือ JPY ในระยะยาว

CIMARA82 Index Historical Performance



Historical Performance by Month

	Jan	Feb	Mar	Apr	May	Jun	Jul	Aug	Sep	Oct	Nov	Dec	Yearly
2016											5.84%	0.92%	6.81%
2017	-0.22%	1.07%	-0.30%	3.21%	-1.84%	-1.65%	4.99%	-0.66%	1.34%	2.24%	0.18%	-0.96%	7.41%
2018	1.83%	2.20%	-0.04%	2.42%	0.63%	2.79%	-0.27%	0.19%	-0.16%	0.87%	0.55%	2.96%	14.80%
2019	-0.09%	0.61%	0.83%	3.08%	0.04%	5.25%	-2.07%	-3.24%	0.91%	1.62%	-2.49%	2.61%	6.93%
2020	1.06%	0.77%	3.80%	1.05%	1.17%	1.61%	0.25%	2.30%	-3.67%	-0.97%	6.11%	0.63%	14.72%
2021	2.06%	4.60%	1.97%	2.43%	0.86%	0.14%	2.11%	0.25%	-2.54%	3.90%	-2.03%	1.76%	16.35%
2022	-0.17%	1.03%	4.44%	-0.01%	-0.50%	0.08%	0.72%	-2.58%	-3.29%	-0.11%	3.02%	-0.26%	2.15%
2023	2.87%	0.23%	2.12%	-1.14%	0.02%	-1.93%	3.68%	0.96%	0.25%	-0.71%	3.88%	0.73%	11.32%
2024	1.58%	0.89%	1.59%	0.21%	-1.07%	-0.32%	-0.55%	-1.36%	0.66%	-3.29%	0.73%	0.51%	-0.54%
2025	5.12%	0.06%	-1.07%	-0.84%	0.38%	0.39%	-0.91%	0.94%	0.91%	-1.19%	-0.68%	-1.00%	1.98%
2026	4.37%	0.98%	-1.00%	3.61%	-0.65%								7.41%

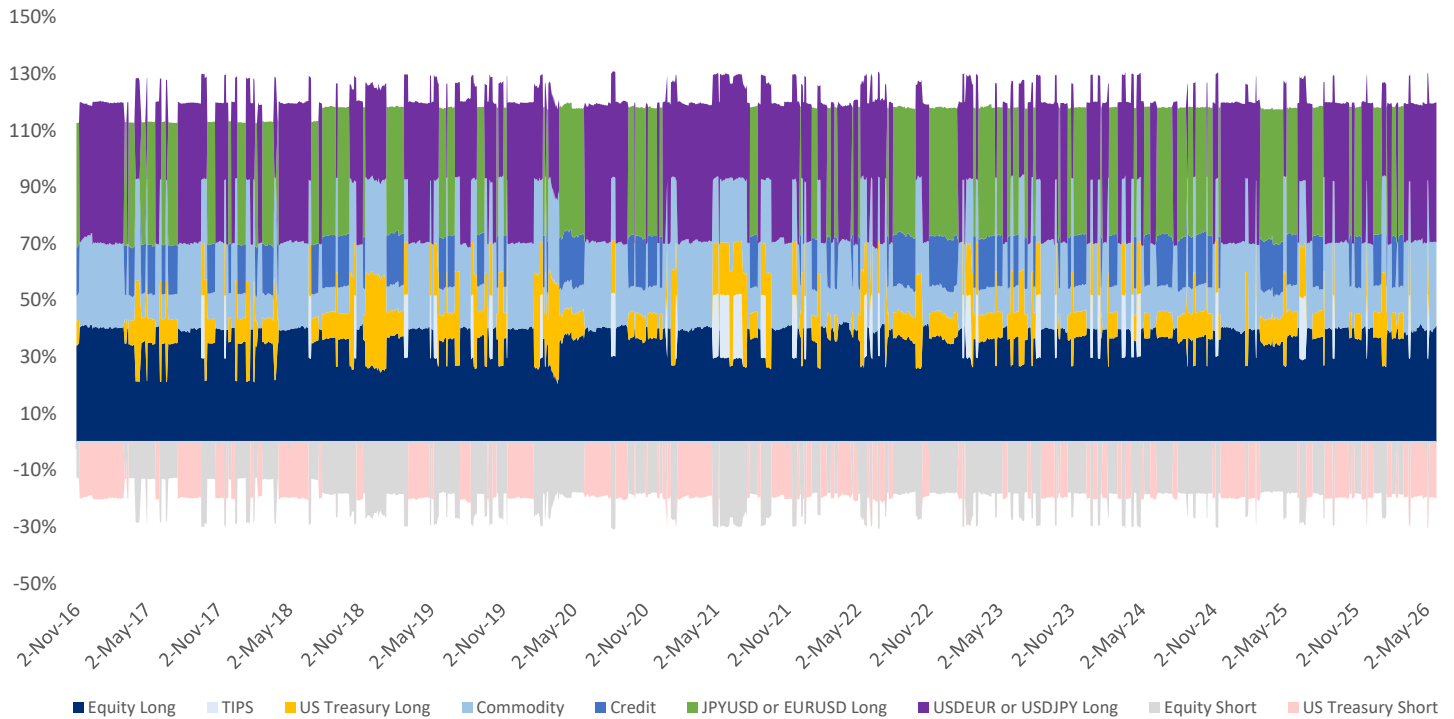
Performance Attribution by Asset Class

Month	Equity	Commodity	Credit	FX	TIPS	US Treasury
Jun-24	0.71%	-0.33%	-0.03%	-0.64%	0.00%	-0.03%
Jul-24	0.36%	-0.78%	0.04%	-0.01%	0.00%	-0.17%
Aug-24	-0.32%	-0.82%	0.14%	0.22%	0.00%	-0.58%
Sep-24	-0.04%	0.85%	-0.07%	0.05%	0.00%	-0.13%
Oct-24	-0.68%	0.30%	0.02%	-2.40%	0.00%	-0.54%
Nov-24	2.70%	-1.42%	0.01%	0.23%	-0.31%	-0.48%
Dec-24	-1.91%	0.65%	0.00%	1.45%	0.00%	0.32%
Jan-25	3.21%	2.75%	0.00%	-0.90%	0.00%	0.05%
Feb-25	1.50%	-0.30%	0.00%	-1.06%	0.12%	-0.21%
Mar-25	-1.95%	0.84%	-0.30%	0.42%	0.00%	-0.08%
Apr-25	-1.09%	-1.28%	-0.27%	1.79%	0.00%	0.01%
May-25	0.11%	0.76%	0.05%	-0.26%	0.00%	-0.29%
Jun-25	0.02%	0.97%	0.05%	-0.86%	0.26%	-0.05%
Jul-25	0.17%	-1.23%	0.04%	-0.12%	0.00%	0.23%
Aug-25	0.24%	0.46%	-0.06%	0.47%	0.00%	-0.16%
Sep-25	0.75%	-0.03%	0.00%	0.17%	0.00%	0.02%
Oct-25	-0.37%	-1.57%	0.05%	0.87%	0.00%	-0.17%
Nov-25	-0.19%	-0.17%	-0.07%	-0.10%	0.00%	-0.15%
Dec-25	-0.32%	-0.29%	0.02%	-0.60%	0.07%	0.12%
Jan-26	0.74%	6.30%	-0.03%	-2.05%	0.00%	-0.59%
Feb-26	-0.47%	0.70%	-0.17%	0.74%	0.00%	0.00%
Mar-26	-1.72%	1.75%	-0.05%	-0.56%	-0.20%	0.00%
Apr-26	1.83%	2.78%	0.00%	-0.92%	0.00%	0.00%
May-26	1.10%	-1.80%	0.00%	0.17%	-0.01%	-0.11%

CIMARA82 Index Historical Allocation¹

Year	Equity Long	Equity Short	US Treasury Long	US Treasury Short	Commodity	Credit	JPYUSD or EURUSD Long	USDEUR or USDJPY Long	TIPS
2016	39.81%	-1.96%	1.32%	-16.64%	27.45%	2.64%	6.69%	40.69%	0.00%
2017	35.67%	-9.04%	7.79%	-9.70%	22.69%	6.27%	15.73%	29.68%	0.90%
2018	34.79%	-12.85%	11.27%	-7.05%	22.15%	7.13%	17.78%	25.98%	0.81%
2019	35.77%	-13.22%	10.11%	-8.40%	23.18%	5.61%	13.92%	30.40%	2.62%
2020	36.02%	-12.41%	9.43%	-7.87%	21.62%	7.24%	18.21%	26.50%	1.26%
2021	35.18%	-12.91%	10.36%	-10.25%	27.23%	1.34%	3.34%	39.96%	5.73%
2022	36.40%	-12.98%	9.06%	-7.39%	20.47%	8.29%	20.73%	24.33%	1.10%
2023	35.51%	-15.27%	10.49%	-5.94%	20.07%	8.13%	20.51%	23.59%	2.92%
2024	36.55%	-13.53%	8.11%	-7.08%	19.23%	8.79%	21.89%	23.51%	2.53%
2025	36.71%	-11.42%	7.17%	-8.76%	20.85%	7.68%	19.43%	26.63%	1.71%
2026 YTD	37.35%	-8.27%	5.71%	-12.10%	25.25%	4.54%	11.32%	34.87%	1.34%

Historical Allocation¹ by Asset Class



Note:
 1. Allocation per asset class shows the breakdown of CIMARA82 index's investment into each asset class. For Equity and US Treasury, we breakdown the allocation into long versus short. For FX, we breakdown into USD long or JPY or EUR long.

Summary Risk Factors (1/2)

IMPORTANT INFORMATION

Past performance

- Past performance data should not be regarded as an indication of future results. Any upward or downward trend in past performance should not be regarded as an indication of future performance. Future performance may be positive or negative. Any transaction or instrument linked to an index (including an index which implements any hypothetical strategy referred to in this communication) would bear additional fees which would reduce overall returns compared with the performance illustrated here, and the return of any transaction or instrument linked to an index may increase or decrease as a result of currency fluctuations.

Simulated past performance (back-tested).

- Past performance data shown in this communication include performance data derived from back-testing simulations. Simulated past performance data are provided for illustrative purposes only. Simulated past performance of an index has been derived from a back-testing simulation, by applying the index methodology to published historical levels of the index constituents, and based on certain assumptions, including the assumption that (during the period of back-testing simulation) no disruption events occurred and no modifications were made to the index methodology. Details of the index methodology are available on request. The actual performance information on which the back-testing simulation is based is available on request.

Simulated past performance (back-tested) - hypothetical strategies

- All past performance data relating to each hypothetical strategy shown in this communication are derived from back-testing simulations. Simulated past performance data are provided for illustrative purposes only. Simulated past performance of a hypothetical strategy has been derived from a back-testing simulation, by applying the strategy methodology to published historical levels of the strategy constituents, and based on certain assumptions, including the assumption that (during the period of back-testing simulation) no disruption events occurred and no modifications were made to the strategy methodology. Details of the strategy methodology are available on request. The actual performance information on which the back-testing simulation is based is available on request. The simulated past performance of a hypothetical strategy should not be regarded as an indication of the performance of any index which implements it. Please see the risk factor regarding hypothetical strategies.

GENERAL RISKS

The Index Is Notional.

- The Index is purely notional and reflects the performance of notional positions in its constituents. There is no actual portfolio of assets to which any person has any ownership interest. The Index is not a substitute for any actual asset or combination of assets.

The index is exposed to market risk.

- The Index is subject to the risks which arise in the markets for the assets whose performance it reflects, including the risk of market disruption.

Performance risk.

- The Index level may go down as well as up and may not be correlated with the value of any or all of its constituents. The Index may be adversely affected by any change in the correlation between its constituents and by fluctuations in any currency exchange rate used to determine its level. The Index has limited performance history and there can be no assurance that it will meet any investment objective or achieve any particular performance. The Index is not directly comparable with any benchmark and may underperform a benchmark.

Limitations in the design of the index.

- In common with all algorithmic strategies, the Index uses a rules-based methodology with fixed processes and parameters that are assumed to be reasonable. However, an alternative index using other processes and parameters may outperform the Index.

Governance and operation of the index.

- Citigroup Global Markets Limited acts as administrator of the Index (the "Index Administrator"). Citigroup Global Markets Limited acts as calculation agent for the Index (the "Index Calculation Agent"). Although the Index is rules-based, the Index Calculation Agent (using expert judgement) may make certain determinations or suspend publication of the Index on the occurrence of certain events (including market disruptions), and the Index Administrator (using expert judgement) may modify the Index to resolve any error, ambiguity or omission. The Index Administrator may also cancel and discontinue the Index.

Summary Risk Factors (2/2)

Conflicts of interest and no duty.

- The Index Calculation Agent and the Index Administrator, and their affiliates, (1) may engage in other activity (including trading the assets represented in the Index) which may give rise to conflicts of interest and which may adversely affect the Index level; and (2) do not act as adviser to, or owe any duty to, any person, including any investor in any transaction or instrument linked to the Index.

Hypothetical strategy.

- The Index which will implement any hypothetical strategy referred to in this communication will be a rules-based quantitative index, and is currently under development by Citi. The Index methodology remains subject to change and the fully developed Index methodology may be substantially different to the methodology which is outlined in this communication. Citi may ultimately determine not to launch this Index or any similar index.

SPECIFIC RISKS

- **The Index may perform poorly if historical performance proves to be a poor indicator of future performance.**
- **The particular ways in which the Index constructs market scenarios may not accurately capture future performance of the Selected Portfolio.**
- **The Index's target volatility of 8% may result in Selected Portfolios with significant allocations to the fixed income asset class, which may underperform alternative portfolios more heavily weighted toward equities, commodities and credit.**
- **The Index may not effectively implement its investment thesis:**
 - There is no single way to implement the concepts presented in this presentation, and the approach reflected in the Index may not be as successful as other approaches to implementing the theory. The Selected Portfolio that the Index selects may not be the optimal portfolio under alternative approaches.
 - The Index does not construct hypothetical investment portfolios from all assets that would be available to an investor, but only from the limited universe of Eligible Market Constituents.
 - The Index applies weighting constraints to the percentage weights that may be assigned to Eligible Market Constituents, which may result in the selection of a Selected Portfolio that is different from the hypothetical investment portfolio that would be selected in the absence of those constraints.
- **The performance of each Constituent is reduced by an implicit financing cost, and any increase in this cost will adversely affect the performance of the Index.**
- **The Selected Portfolio may be composed of Eligible Market Constituents in a number of different asset classes and market sectors, and they may offset each other.**
- **The Index's volatility targeting feature may adversely affect Index performance**
- **The Index may fail to maintain a 8% volatility.**
- **The Selected Portfolio may be composed of risky assets.**
- **The Index will be calculated pursuant to a set of fixed rules and will not be actively managed.**
- **The Index has limited actual performance information.**

QuantCube Disclaimer

GENERAL

- No warranty, express or implied, is given as to the accuracy, completeness, timeliness, merchantability, or fitness for a particular purpose of QuantCube's methodology or any data derived therefrom. QuantCube accepts no liability for any direct, indirect, or consequential loss or damage arising from reliance on or use of an Index based on its methodology, and its analyses do not constitute an offer or invitation to partake in any transaction, or any other sale, purchase, endorsement or recommendation of any securities, Index or other product or service. QuantCube is an independent third party and does not sponsor the Index.

VARIATIONS

- QuantCube reserves the right to amend the methodologies used for the Indicators as part of its ongoing research and development efforts to improve accuracy and robustness. A material change to the QuantCube methodology would result in a new series of the data becoming available. The Index Administrator may, using Expert Judgement, amend the methodology of the Index to use such new series of data. There can be no guarantee that either the previous or the new methodology will result in optimal performance of the Index.

Important Information

This communication has been prepared by individual sales and/or trading personnel of Citigroup Inc. or its subsidiaries or affiliates (collectively Citi). In the United Kingdom: Citigroup Global Markets Limited ("CGML") is authorised by the Prudential Regulation Authority and regulated by the Financial Conduct Authority and the Prudential Regulation Authority (together, the UK Regulator) and has its registered office at Citigroup Centre, Canada Square, London E14 5LB. Amongst its affiliates, (i) Citibank, N.A., London Branch is authorised and regulated by Office of the Comptroller of the Currency (USA), authorised by the Prudential Regulation Authority and subject to regulation by the Financial Conduct Authority and limited regulation by the Prudential Regulation Authority and has its UK establishment office at Citigroup Centre, Canada Square, London E14 5LB and (ii) Citibank Europe plc, UK Branch is authorised by the Central Bank of Ireland and by the Prudential Regulation Authority and subject to regulation by the Central Bank of Ireland, and limited regulation by the Financial Conduct Authority and the Prudential Regulation Authority and has its UK establishment office at Citigroup Centre, Canada Square, London E14 5LB. Outside the UK: (i) Citibank Europe plc ("CEP") is Licensed by the European Central Bank and regulated by the Central Bank of Ireland and the European Central Bank under the Single Supervisory Mechanism and has its registered office at 1 North Wall Quay, Dublin 1, (ii) Citibank Europe plc branches located in the EEA are subject to regulation by the respective host country regulator and the Central Bank of Ireland (iii) Citigroup Global Markets Europe AG ("CGME"), authorised and regulated by the Bundesanstalt für Finanzdienstleistungsaufsicht (BaFin) and has its registered office at Reuterweg 16, D-60323 Frankfurt am Main, Germany. This communication is directed at persons (i) who have been or can be classified by Citi as eligible counterparties or professional clients in line with the applicable rules, (ii) Persons in the United Kingdom, who have professional experience in matters relating to investments falling within Article 19(1) of the Financial Services and Markets Act 2000 (Financial Promotion) Order 2005 and (iii) other persons to whom it may otherwise lawfully be communicated. No other person should act on the contents or access the products or transactions discussed in this communication.

To the extent that this communication/these materials has/have been produced in the UK by CGML or Citibank N.A. London branch, it is/they are intended for distribution solely to clients of Citi in jurisdictions where such distribution is permitted and the recipient shall not provide or distribute such materials to any person located in a jurisdiction where it would otherwise trigger a financial services licensing requirement.

To the extent that this communication/these materials has/have been produced by CGME, it is/they are intended for distribution solely to clients of Citi in jurisdictions where such distribution is permitted and the recipient shall not provide or distribute such materials to any person located in a jurisdiction where it would otherwise trigger a financial services licensing requirement.

To the extent that this communication/these materials has/have been produced by Citibank Europe plc, it is/they are intended for distribution solely to clients of Citi in jurisdictions where such distribution is permitted and the recipient shall not provide or distribute such materials to any person located in a jurisdiction where it would otherwise trigger a financial services licensing requirement.

This communication is provided for information purposes only with respect to each index discussed herein (each an "Index") and does not constitute (i) a recommendation, an offer or a solicitation to deal in any financial product, enter into any transaction or adopt any investment strategy, or (ii) legal, tax, regulatory, financial or accounting advice. Neither the entity establishing and sponsoring any Index (each, an "Index Sponsor"), nor the entity acting as calculation agent for any Index (each, an "Index Calculation Agent"), nor any of their respective directors, officers, employees, representatives, delegates or agents (together with each Index Sponsor and each Index Calculation Agent, each a "Relevant Person") makes any express or implied representation or warranty as to (i) the advisability of purchasing or entering into any financial product the performance of which is linked, in whole or in part, to any Index (an "Index Linked Product"), (ii) the levels of any Index at any particular time on any particular date, (iii) the results to be obtained by the issuer of, the counterparty to, or any investor in any Index Linked Product, or any other person or entity, from the use of any Index or any data included therein for any purpose, (iv) the merchantability or fitness for a particular purpose of any Index, or (v) any other matter. Each Relevant Person hereby expressly disclaims, to the fullest extent permitted by applicable law, all warranties of accuracy, completeness, merchantability or fitness for a particular purpose with respect to any Index and any information contained in this communication. No Relevant Person shall have any liability (direct or indirect, special, punitive, consequential or otherwise) to any person even if notified of the possibility of damages. Neither any Index Sponsor nor any Index Calculation Agent is under any obligation to continue the calculation, publication and dissemination of any Index nor shall any of them have any liability for any error, omission, interruption or delay relating to any Index. Each Index Sponsor and each Index Calculation Agent shall each act as principal and not as agent or fiduciary of any other person.

During the normal course of its business, any Relevant Person may enter into or promote, offer or sell transactions or investments (structured or otherwise) linked to any Index and/or any of its constituents. In addition, any Relevant Person may have, or may have had, long or short principal positions and/or actively trade, by making markets to its clients, positions in or relating to any Index or any of its constituents, or may invest or engage in transactions with other persons, or on behalf of such persons relating to any of these items. Relevant Persons may also undertake hedging transactions related to the initiation or termination of financial products or transactions, which may adversely affect the market price, rate or other market factor(s) underlying any constituent or any Index. Relevant Persons may have an investment banking or other commercial relationship with and access to information from the issuer(s) of constituents. Such activity may or may not have an impact on the level of any Index, but potential investors and counterparties should be aware that a conflict of interest could arise where anyone is acting in more than one capacity, and such conflict may have an impact (either positive or negative) on the level of any Index.

Each Index reflects the performance of notional investment positions in its constituents. There is no actual portfolio of assets to which any person is entitled or in which any person has any ownership interest. Each Index merely identifies certain hypothetical investment positions, the performance of which will be used as a reference point for the purpose of calculating the level of the relevant Index.

Past performance is not indicative of future performance. Any numbers or figures presented as past performance in this communication may include performances calculated from back-testing simulations. Any back-testing information provided herein is illustrative only and derived from proprietary models based on certain historic data and assumptions and estimates. Such back-testing information should not be considered indicative of the actual results that might be obtained from an investment or participation in an Index Linked Product. Any scenario analysis is for illustrative purposes only and does not represent the actual performance of the relevant Index nor does it purport to describe all possible performance outcomes for the relevant Index.

Any trade or strategy ideas included in this communication are provided by our Sales and Trading department. Such material is therefore not a direct recommendation from our Research department and the directives on the independence of research, and rules prohibiting dealing ahead of dissemination, do not apply. On the occasions where the information provided includes extracts or summary material derived from research reports published by our Research department, you are advised to obtain and review the original piece of research to see the research analyst's full analysis. Any opinions attributed to us constitute our judgment as of the date of the relevant material and are subject to change without notice. Provision of information may cease at any time without reason or notice being given. Although all information has been obtained from, and is based upon, sources believed to be reliable, it may be incomplete or condensed and its accuracy cannot be guaranteed.

Each Index is described in full in the applicable Index Conditions, which are available upon request from us. Any decision to invest in an Index Linked Product should be based upon the information contained in the associated prospectus, offering document or other legal document, together with the applicable Index Conditions.

Each Index and the information contained in this communication are the applicable Index Sponsor's proprietary and confidential material. No person may use any Index in any way or reproduce or disseminate the information contained in this communication without the prior written consent of the applicable Index Sponsor. This communication is not intended for distribution to, or use by any person in, a jurisdiction where such distribution is prohibited by applicable law or regulation. No Index is in any way sponsored, endorsed or promoted by the issuer or sponsor, as applicable, of any of its constituents.

In addition, Citi may submit prices, rates, estimates or values to data sources that publish indices or benchmarks, which may be referenced in products, transactions or an Index discussed in this communication. Such submissions may have an impact on the level of the relevant index or benchmark and consequently on the value of the products, transactions or relevant Index. Citi will make such submissions without regard to your interests under a particular product, transaction or Index. Citi has adopted policies and procedures designed to mitigate potential conflicts of interest arising from such submissions and our other business activities. In light of the different roles performed by Citi you should be aware of such potential conflicts of interest.

Further information on Citi and its terms of business for professional clients and eligible counterparties are available at: http://icg.citi.com/icg/global_markets/uk_terms.jsp.

© 2026 Citigroup Global Markets Limited. Citi, Citi and Arc Design are trademarks and service marks of Citigroup Inc. or its affiliates and are used and registered throughout the world.